

Jade Ching-yuk Ng

(b.1992, Hong Kong)

Her soft, intricate works emboss the fragility of a physical intimate relationship between herself and others. Jade is interested in quoting the essence of touch and separation at a moment in time. By exploring the possibilities of forms in painting, Jade conceives of her paintings as an assembly of her and others' body puzzles. Often revolving around personal travel experience, classical myth, alchemy, religious rituals and anatomy as references. Jade deconstructs their symbolism by attaching her own interpretation, and her symbols seem to depart from their literal connotations into an obscure and ambiguous fiction. The agency of framing becomes a gesture of embracing, defining actual and pictorial surrealistic space. Its theatricality encourages visitors to consider characters that are depicted in dialogue with themselves, whilst also considering the fine edge of collision in reality and imagination.

CORNUCOPIA

AT SASSOON GALLERY



JADE CHING-YUK NG

Hold fast to desire, 2021

Caran d'Ache, gouache and oil on MDF wood
280x184x5 cm

£8000



JADE CHING-YUK NG
Finale-It's (kind of) a love story, 2021
Caran d'Ache on Rosaspina paper with
artist made frame
57x50x3 cm

£900



JADE CHING-YUK NG

The blossom of anatomical spring, 2021

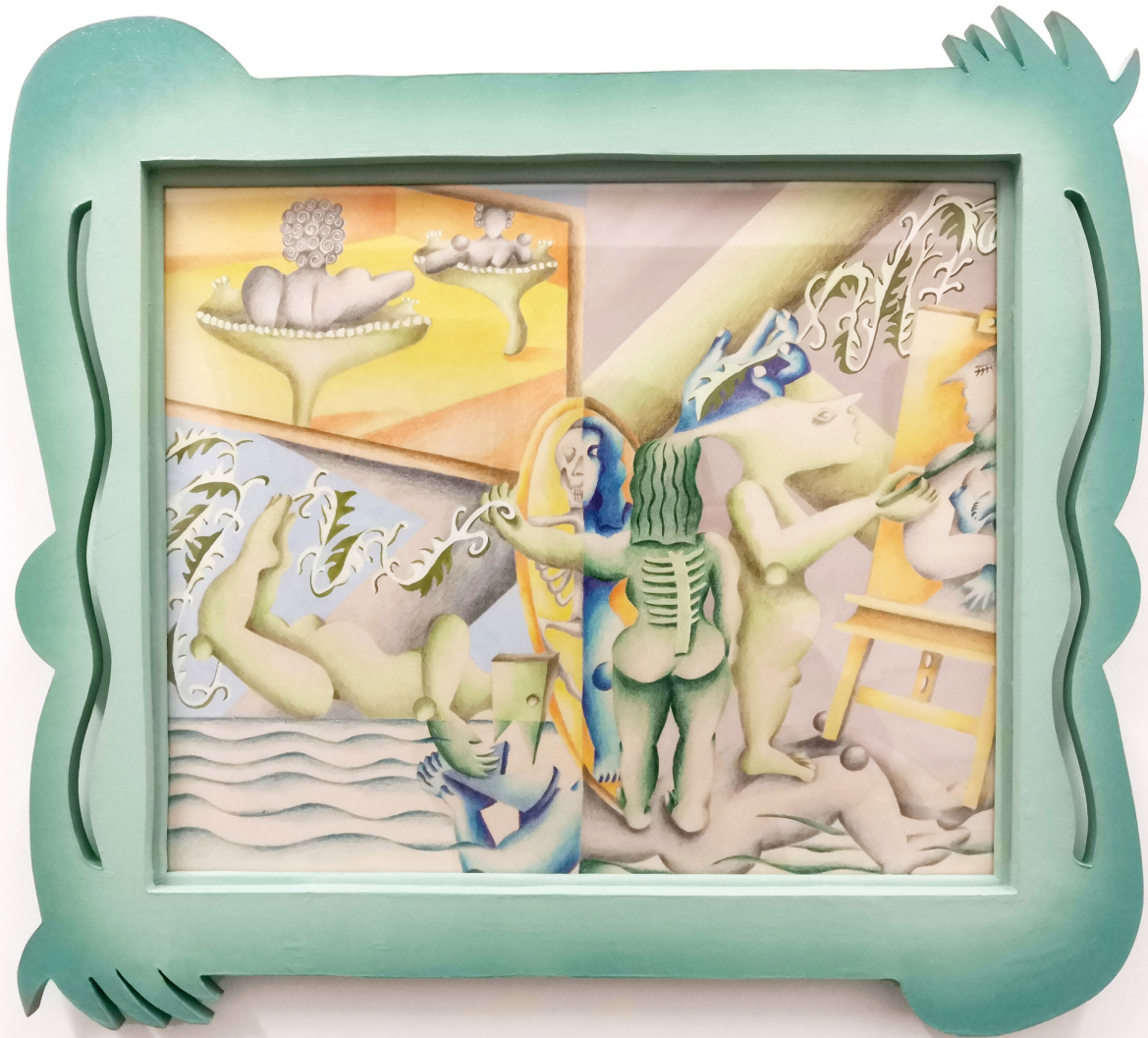
Caran d'Ache, Graphite, gouache
on Rosaspina paper with artist made frame
57x50x3 cm

£900



JADE CHING-YUK NG
Split, flip, 2021
Caran d'Ache, gouache on
Rosaspina paper with artist made frame
58x48x3 cm

SOLD



JADE CHING-YUK NG
Self in distance, 2021
Caran d'Ache, gouache on
Rosaspina paper with artist made frame
57x49x3 cm

£900



JADE CHING-YUK NG
Flip, 2020
Graphite, oil, acetate on Rosaspina
paper with artist made frame
40x41x2 cm

£600



JADE CHING-YUK NG
Peeping through myself, 2020
Graphite, oil, acetate on Rosaspina
paper with artist made frame
44x38x2 cm

SOLD



JADE CHING-YUK NG
In a symphony of eyes wide open, 2021
Oil, Caran d'Ache, gouache,
acetate on MDF wood
42x39x2 cm

SOLD



JADE CHING-YUK NG
Drawing through the glass, 2021
Caran d'Ache, graphite, gouache
and oil on MDF and plywood
39x40x2 cm

£600



JADE CHING-YUK NG

We will rise into the order of the most ancient sublimations, 2020

Caran d'Ache, gouache,
on paper and artist made MDF
42 x 33cm

£600



JADE CHING-YUK NG

A milky bath, 2021

oil, gouache, Caran d'Ache on MDF wood
46x35x3 cm

SOLD



JADE CHING-YUK NG

Rings of fire, 2021

Paper, Caran d'Ache and oil on MDF wood
46x49x3 cm

SOLD



JADE CHING-YUK NG

Hypocaust, 2020

Caran d'Ache on artist made MDF

41 x 36cm

£600



JADE CHING-YUK NG

Mouth of truth, 2020

Caran d'Ache, gouache, oil
on paper and artist made MDF
40 x 38cm

£600



JADE CHING-YUK NG

Scareleton, 2020

clay, lino, oil, tufted cloth, Caran d'Ache, gouache
on paper mounted and artist made plywood
90 x 120 x 38cm

£1100

Education:

2012–2013 Fine Art Foundation Diploma, Central Saint Martins Art & Design
2013–2016 BA (1st Hons), The Slade School Of Fine Art
2016–2018 MA, Royal College of Art

Selected Exhibitions:

2020 *Offerings (I)*, Cornucopia, London
2020 *Pending*, San Mei Gallery, London
2019 *A High Hang*, Eccleston Project Space, London
2019 *June Mostra*, British School at Rome, Rome
2019 *17 Edizione Spazi Aperti*, Accademia Di Romania in Roma
2019 *March Mostra*, British School at Rome, Rome
2018 *December Mostra*, British School at Rome, Rome
2018 *RCA Degree Show*, Royal College of Art
2018 *Hold your Horses*, hold it tight and never let go, Southwark Park Gallery, London
2018 *OUTPUT RCA Print*, Southwark Park Gallery, London
2018 *EDITIONS*, Tripp Gallery, London
2018 *The Pink Panther Show*, Gallery 46, London
2018 *Crash Gods of the Unicurse II*, Horse Hospital, London
2018 *Crash Gods of the Unicurse I*, LimboLimboLimbo, London
2017 *Dik Pik*, Canal Mills Armley, Leeds
2017 *Freshly Squeezed*, Southwark Park Gallery, London
2016 *Eclectic Dreamers*, Siegfried Contemporary, London
2016 *Slade Degree Show 2016*, The Slade School of Fine Art, London
2015 *East Anglian Record*, Assembly Point, London
2015 *Eleanor Brown's Bökship*, Matt's Gallery, London
2015 *Slade Queer Club*, Vauxhall Tavern, London
2014 *Peach Freedom*, The Victoria Pub, London
2014 *Be Beuy*, Bezalel Academy of Art & Design, Jerusalem
2014 *Fly me to_____ & Les Muses Sataniques*, Video Pub, Jerusalem & The Flying Dutchman, London

Awards:

Cass Art Painting Prize 2016
Travers Smith Art Award 2018
British School at Rome Abbey Major Painting Scholarship 2018

Private Collection:

Gail Rebuck, Chair of Penguin Random House

Talks:

2015 "Cairo to Kinshasa", UCL Petrie Museum, London

Publications:

<https://yngspc.com/artists/2019/05/jade-ching-yuk-ng/>
<https://britishschoolatrome.wordpress.com/2019/06/03/meet-the-artists-jade-ching-yuk-ng/>
<https://britishschoolatrome.wordpress.com/2018/12/21/meet-the-artists-jade-ching-yuk-ng-december-mostra-2018>
<https://fadamagazine.com/2018/02/10/the-pink-panther-show/>